



Western Arctic Mariner's Guide

HABITAT: Summer

Legend

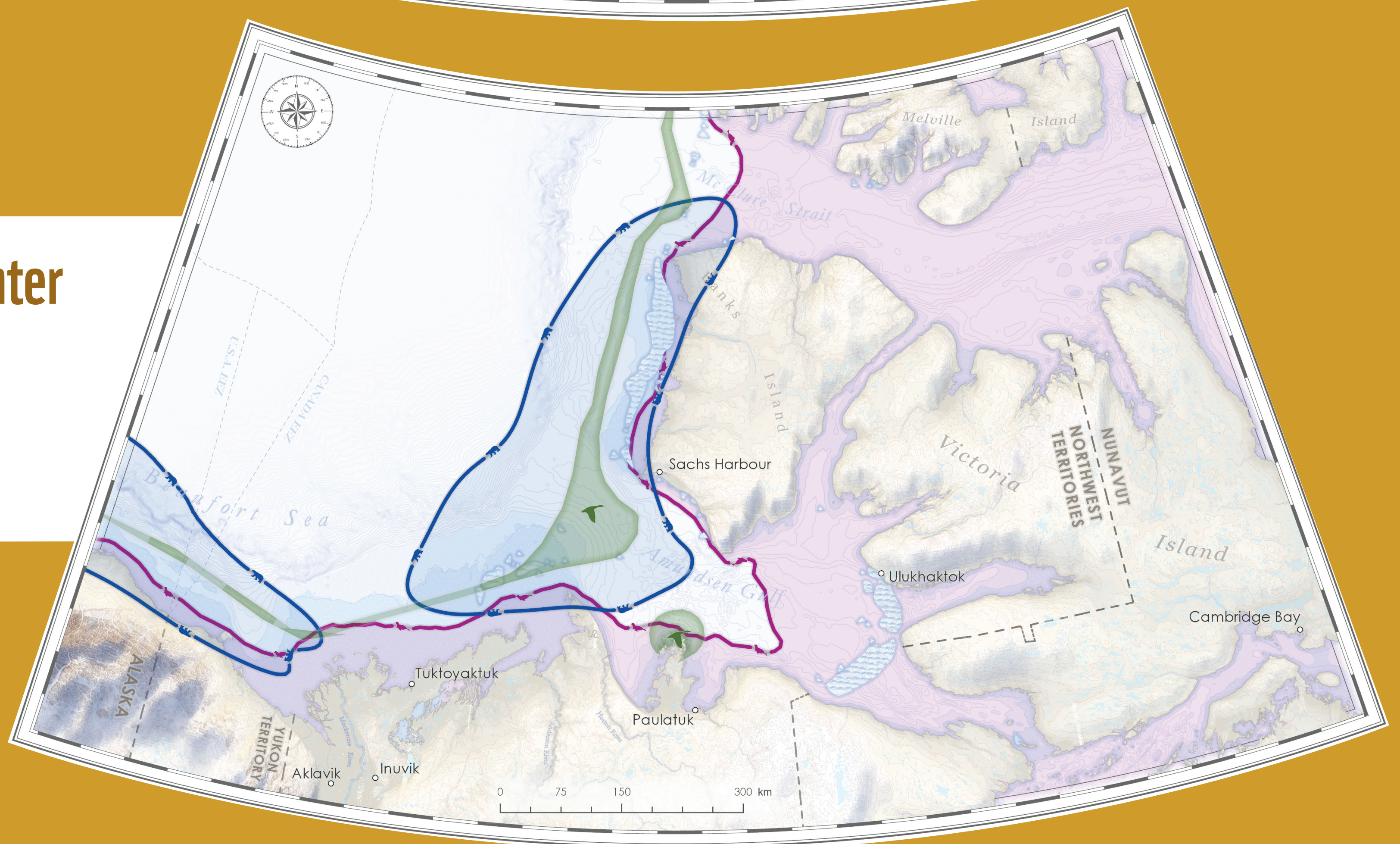
- Polar Bear Concentration
- Ringed Seal Concentration
- Bowhead Concentration
- Beluga Concentration
- Key Migratory Bird Habitat



HABITAT: Winter

Legend

- Polar Bear Concentration
- Ringed Seal Concentration
- Polynya
- Key Migratory Bird Habitat



NOTE: For navigation purposes, please use charts provided by the Canadian Hydrographic Service.

CONTACT

Please contact for errors, omissions, comments, additions

Andrew Dumbrille, 613-290-2006
adumbrille@wwfcanada.org

Vernon Amos, 867-777-2828
igc-c@jointsec.nt.ca

MARINE WILDLIFE SIGHTINGS, ENCOUNTERS & INCIDENTS

Report to: Department of Fisheries and Oceans, Steve Ferguson,
204-983-5057, steve.ferguson@dfo-mpo.gc.ca

You may be asked to provide:

- Date and time you found the animal or witnessed the incident
- Specific location, including latitude and longitude (if available) or driving directions (if accessible by land)
- Species or type of animal, including a description of the size, colour, features
- Condition of the animal – alive, sick or injured, freshly dead, badly rotting away
- Number of animals involved
- Your contact information, including name and phone number

RECOMMENDATIONS

Whale Sensitive Habitats

- If possible, avoid whale calving, foraging, molting and migration areas and follow mitigation procedures in the vicinity of marine mammals:¹
 - Wildlife will be given right-of-way;
 - Maintain a straight course and constant speed, avoiding erratic behaviour;
 - When marine mammals appear to be trapped or disturbed by vessel movements, implement appropriate measures to mitigate disturbance, including stoppage of movement until wildlife have moved away from the immediate areas; and
 - Adhere to setback distances (see chart) when in the presence of marine mammals.
- Passage through or close to Beluga Management Zones 1A and 1B outside of designated routes, even if it's the shortest route should be avoided from break-up to August (see map) (Contact HTC for annual variations).

Migratory Bird Sanctuaries

- Hunting, disturbing, destroying or taking of migratory birds or their nests are prohibited.
- Maintain a 500 m setback for ships from seabird colonies when birds are present.⁵
- Maintain a 100 m setback from seabird colonies for zodiacs, kayaks and other small launch vessels.
- Maintain a 500 m setback distance from sea duck colonies, moulting aggregations of sea ducks and waterfowl.
- Avoid any sharp or loud noises, do not blow horns or whistles, and maintain constant engine noise levels.
- Always travel at steady speeds when close to seabird and waterbird colonies, moving parallel to the shore rather than approaching the colony directly.

Sources:
¹ Carter, N., Dawson, J., Knop, J., Joyce, J., Weber, M., Kochanowicz, Z., Mussels, O. (2018). Arctic Corridors and Northern Voices-Governing marine transportation in the Canadian Arctic, Cambridge Bay, Nunavut.
² Baffinland Iron Mines. (2016). Shipping and Marine Wildlife Management Plan.
³ Paulatuk Community Conservation Plan. (2016).
⁴ Draft Nunavut Land Use Plan. (2016). Nunavut Planning Commission. http://www.nunavut.ca/files/2016DNLUP/2016_Draft_Nunavut_Land_Use_Plan.pdf
⁵ Carter et al. (2018). Arctic Corridors and Northern Voices-Governing marine transportation in the Canadian Arctic, Ulukhaktok, Northwest Territories.
⁶ Sachs Harbour Community Conservation Plan. (2016).
⁷ Carter et al. (2018). Arctic Corridors and Northern Voices-Governing marine transportation in the Canadian Arctic, Aklavik, Northwest Territories.

⁸ Inuvik Community Conservation Plan (2016).
⁹ Draft Beaufort Sea Beluga Management Plan Tourism Guidelines. (2018).
¹⁰ Migratory Bird Sanctuary Regulations CRC c. 1036. 2009 http://laws-lois.justice.gc.ca/eng/regulations/C.R.C._c._1036/
¹¹ Environment and Climate Change Canada. (2017). <https://www.canada.ca/en/environment-climate-change/services/avoiding-harm-migratory-birds/seabird-waterbird-colonies-disturbance.html>
¹² Ulukhaktok Community Conservation Plan (2016).
¹³ Tuktoyaktuk Community Conservation Plan (2016).
¹⁴ Aklavik Community Conservation Plan (2016).